



RK LIMITED EDITION

Succulent Desk Planters

NOTES: I use Gorilla Super Glue on my projects dries in 8-10 seconds

THIS PROJECT IS DESIGNED FOR 1/8" Material

Use the included Notch tool to figure out which file to print. I have include the range of .10" to .15" if you need a different size reach out to me if you don't know how to modify.

Note: in the original pics I used an Easyl from Walmart Craft section. You can use the one I designed or purchase one from Walmart. I also purchased the succulents and miniature canvases from Walmart.

Putting the Planters Together

Step 1. Glue the inside box parts together where the notches connect

Step 2. Glue the Planter Lid on fitting it in the notches on the top of the box from Step 1.

Step 3. Glue the sides on. Line them up so that they allow the notch in the bottom of the inside to hang down so you will be able to insert into the base.

Repeat with the other planter. Then you can glue them or just set them on the base.

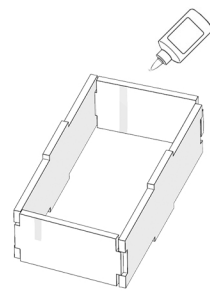
Putting the Easyl together.

Glue the back brace onto the front part of the easyl. Make sure the back brace is sitting square on the table for proper angle. Then glue the shelf in.

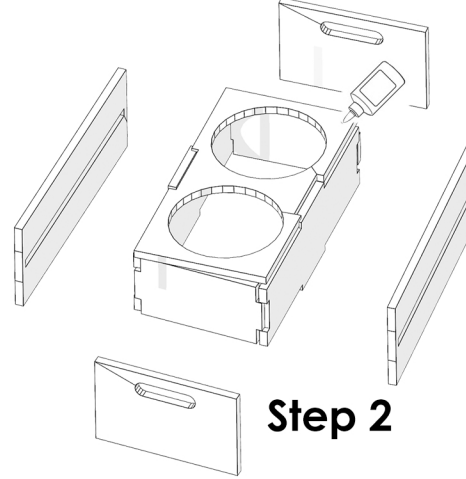
You can either set the easyl on the base or glue it. I glued mine once I figured out where I wanted it.

I included some signs for use on the easyl - Happy Birthday, Happy Valentine's, Happy Mother's Day, etc but you can make your own.

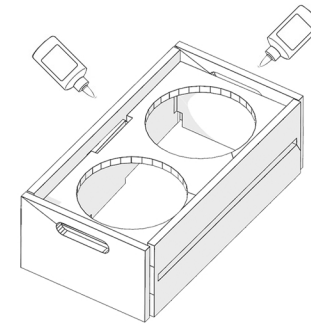
For Questions:
robert@rkmediapro.com



Step 1

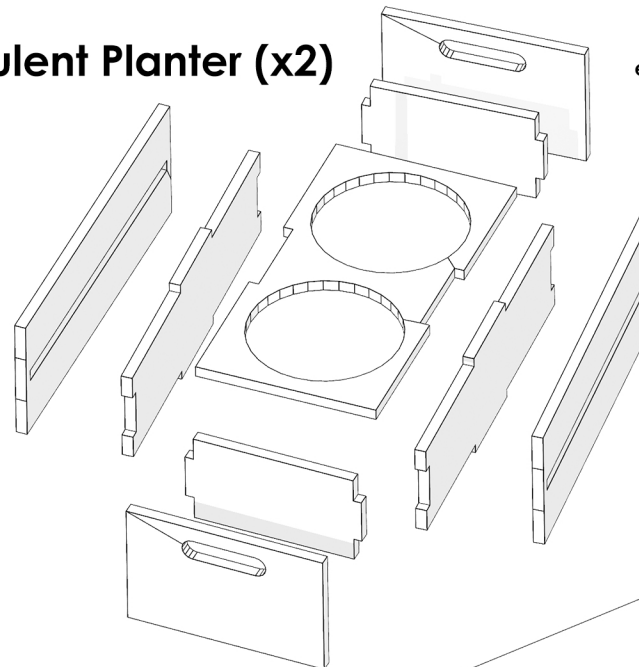


Step 2

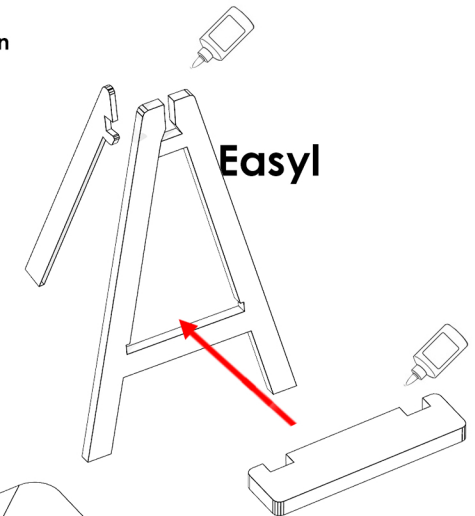


Step 3

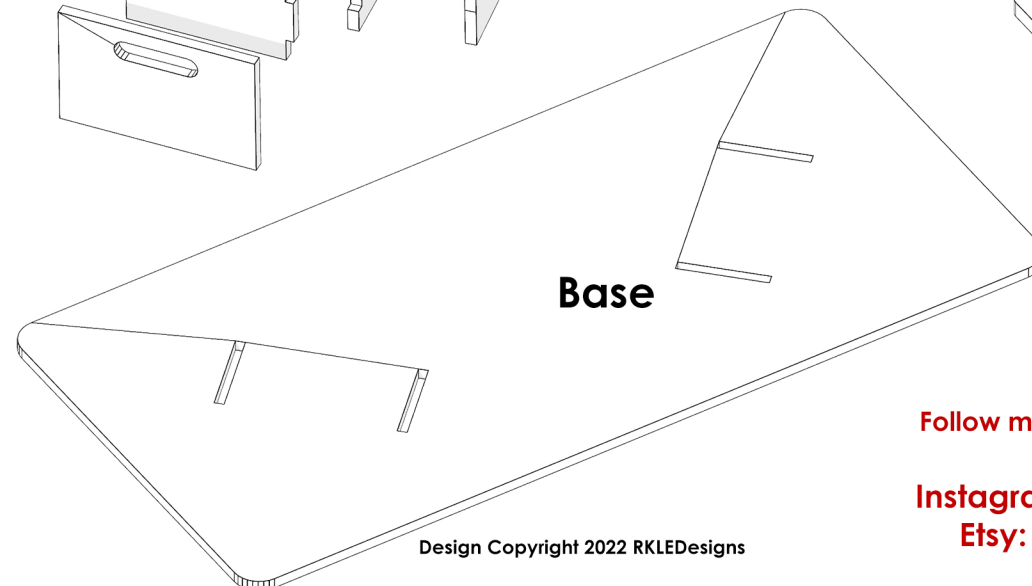
Succulent Planter (x2)



There are little engraved pieces on either side of this board for visual effect, not necessary if you want to skip



Easyl



Base

Follow me on social media:

Instagram: RKLEDesigns
Etsy: RKLEDesigns

Design Copyright 2022 RKLEDesigns